

Sedgwick County EMS



EMS Post 9 Relocation



*Sedgwick County...
working for you*

EMS Post 9 Overview

- Located 700 N Webb for 20 years
 - Lease expired in 2002
- Relocated to 1010 N. 143rd E
- CIP project approved in 2011



Current & Future Benefits

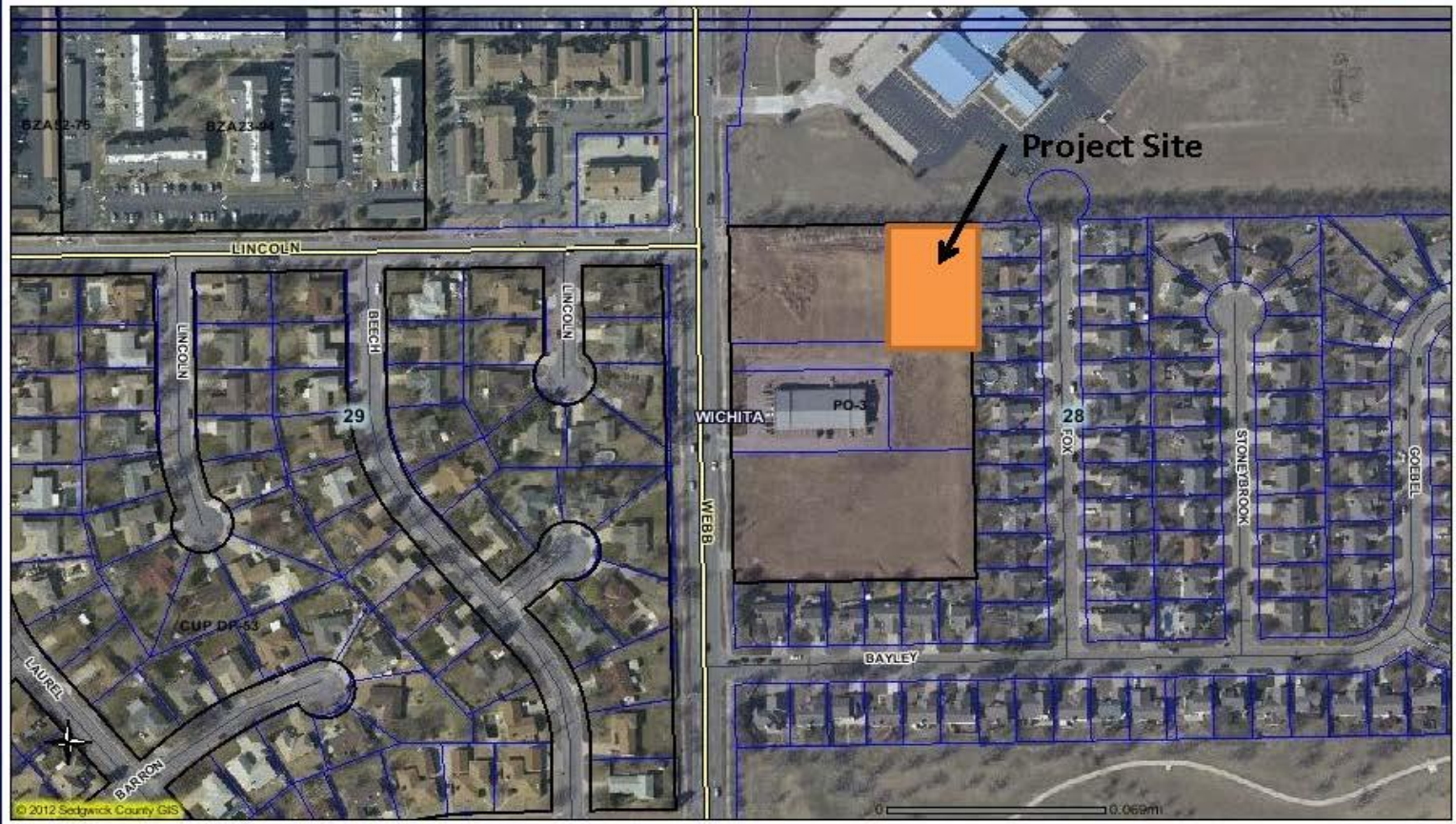
- Call demand analysis & trends indicate optimal location south & west of current location
- Relocation will provide improved coverage and response times
- Property value reasonable for the area



Sedgwick County...
working for you

Sedgwick County Maps

[Map Legend](#)

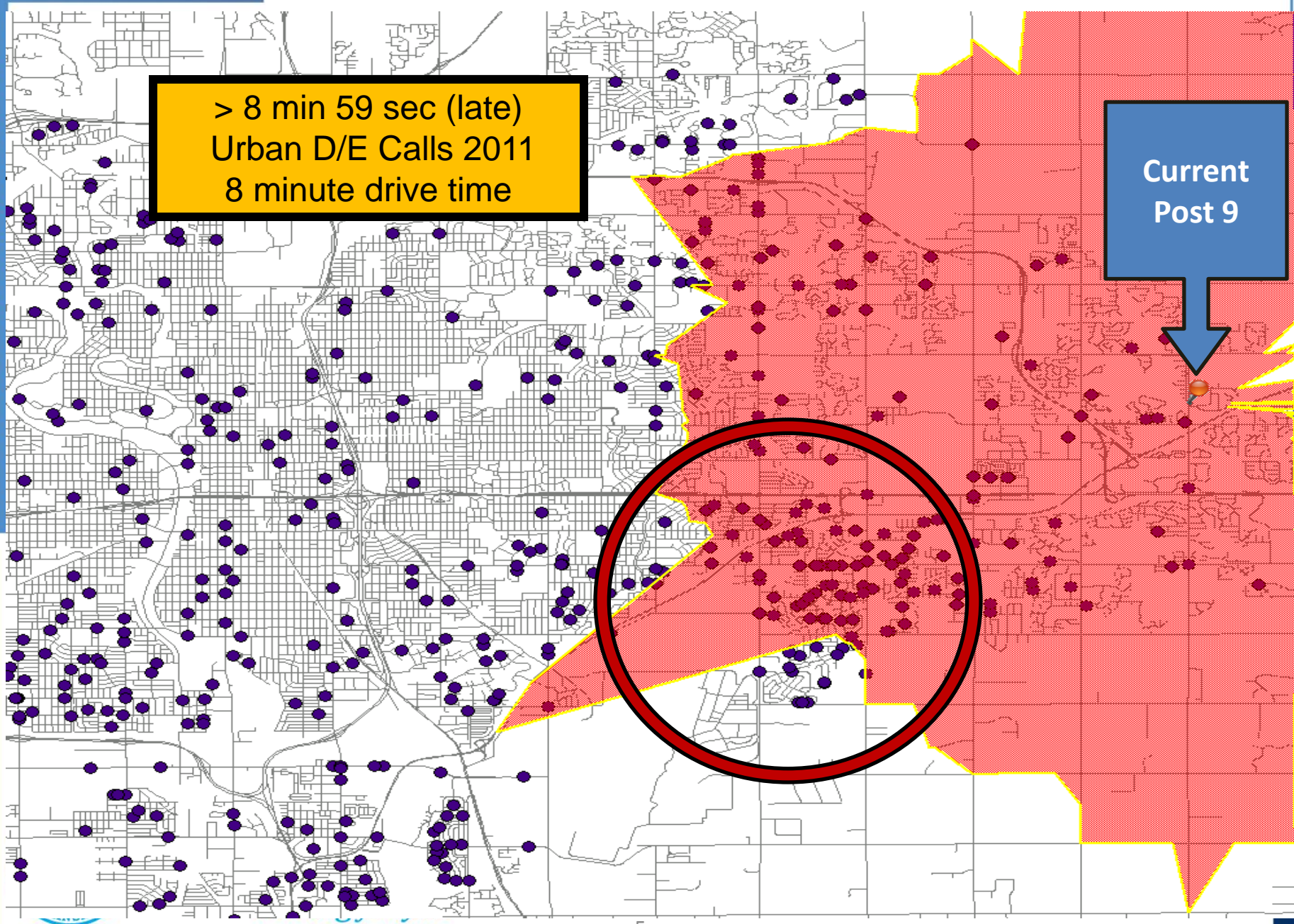
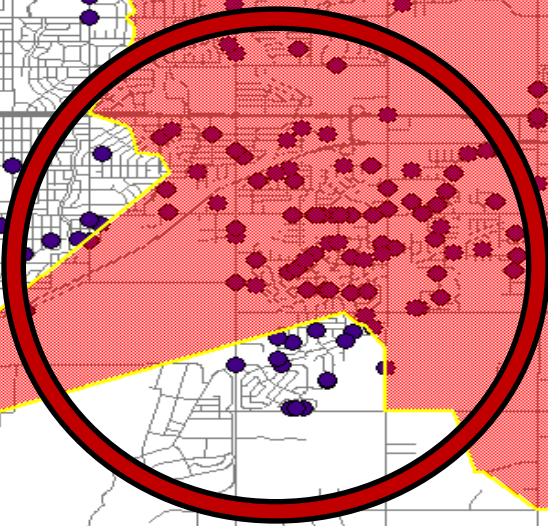
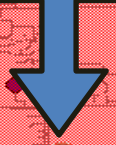


Sedgwick County
GIS
 Geographic Information Services
 Division of Information & Operations
www.sedgwickcounty.org/gis
 525 N. Main, Suite 212, Wichita, KS 67203
 Tel: 316.660.9290 Fax: 316.262.1174

DISCLAIMER: It is understood that, while Sedgwick County Geographic Information Services (SCGIS), City of Wichita GIS, (for purposes of the road delineation file), participating agencies, and information suppliers, have no indication or reason to believe that there are inaccuracies in information provided, SCGIS, its suppliers make no representations of any kind, including, but not limited to, warranties of merchantability or fitness for a particular use, nor are any such warranties to be implied with respect to the information, data or service furnished herein. In no event shall the Data Providers become liable to users of these data, or any other party, for any loss or damages, consequential or otherwise, including but not limited to time, money, or goodwill, arising from the use, operation or modification of the data. In using these data, users further agree to indemnify, defend, and hold harmless the Data Providers for any and all liability of any nature arising out of or resulting from the lack of accuracy or correctness of the data, or the use of the data. No person shall sell, give or receive for the purpose of selling or offering for sale, any portion of the information provided herein.

> 8 min 59 sec (late)
Urban D/E Calls 2011
8 minute drive time

Current
Post 9



8 min 59 sec (late)
Urban D/E Calls 2011
8 minute drive time

Proposed
Post 9

