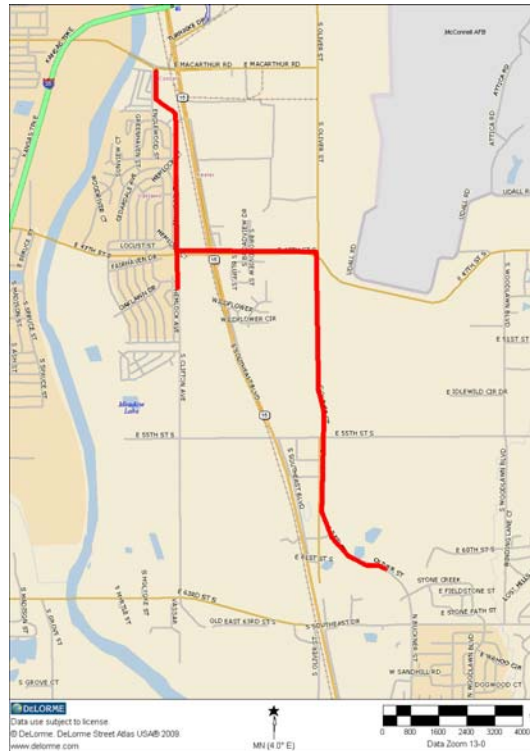


Project Scope for 2013-14 Transportation Enhancement Program Application

Project Name: Aviation Pathway
Primary Category: Pedestrian and Bicycle Facilities
Requestor: Sedgwick County
Project Beginning Point: MacArthur Road and Englewood St. (Wichita pathway system)
Project Ending Point: Buckner and Commerce Drive (Derby pathway system)
Project Length: 3.61 miles
Estimated Total Project Cost: \$1,270,000 **Federal Aid Requested:** 80% **Local Match:** 20%

Project Description Construction of a shared use path from MacArthur Road and Englewood in Wichita, south along Englewood and Clifton to 47th St. South, east along 47th St. South to Oliver, South along Oliver/Buckner to the Buckner path in Derby at approximately Commerce Drive. The path would be constructed of concrete with a minimum width of 10 feet and the project includes an extension along Clifton from 47th St. South to the site of the Oaklawn Activity Center/Oaklawn Elementary School. Benches would be placed at appropriate locations along the route.

General Area Map



See attached aerial photo based map for additional detail.

Contact Information: James Weber, P.E.
Deputy Director of Public Works
Sedgwick County, Kansas
1144 S. Seneca
Wichita, KS 67213
(316) 660-1773
jweber@sedgwick.gov

Connectivity to Traffic Generators The proposed pathway will connect the Wichita path system (60 miles) to the Derby path system (25 miles) and provide new connections to the following traffic generators along the way:

- Oaklawn Improvement District residential area (5-10% of households without vehicles)
- Sunview Improvement District residential area (5-10% of households without vehicles)
- Deer Lakes Estates residential area (5-10% of households without vehicles and no bike/pedestrian access across K-15 to Oaklawn School and Oaklawn Activity Center)
- Oaklawn Activity Center
- Oaklawn Elementary School (Derby School District – USD 260)
- The Opportunity Project Learning Center South (Head Start/Early Head Start)
- Spirit Aerosystems
- Boeing Wichita
- Wichita Area Technical College
- Youthville (private social services agency for youth)

Design Features The pathway is currently under design. Pathway elements will meet acceptable AASHTO and ADAAG guidelines. Pathway will be a minimum of 10 feet in width and will cross major streets (Clifton, K-15 and 47th) at signalized intersections or crosswalks. Benches will be placed along the route at appropriate areas with particular emphasis placed on locations where the pathway intersects the South Main (#12) bus route on the Wichita Transit system.

Project Status Preliminary design has been completed on the portion of the route from 47th St. South to the north end of the Derby pathway system on Buckner. Concept design has been completed and work on the preliminary design has begun on the rest of the route. All of the route, except for a short segment near the north end that is located between Clifton and Englewood, can be constructed in existing public right of way. The needed right of way is on a single undeveloped parcel.

Community Awareness and Support Letters of support have been received from the Oaklawn Improvement District, the Derby Recreation Commission, and the Derby School District. Additional letters of support are expected to be received from the City of Wichita and City of Derby. There is a long history of concern about pedestrian/bicycle access in the area. Major issues have been:

- Desire to connect the Wichita pathway system to the Derby and Mulvane pathway systems. The WAMPO Pathways Plan has identified the link between Derby and Wichita as a priority missing link.
- Access between the schools on the west side of K-15 and the residential areas on the east side of K-15.
- Access to the Wichita Area Technical College and The Opportunity Project.
- Need for alternative modes of transportation due to high number of households without access to vehicles in the Oaklawn, Sunview and Deer Lakes Estates neighborhoods.
- Access to the Boeing/Spirit industrial complex for employees from Derby.

Device: DWG To PDF.pc3 Page Setup: ----- By: Taylor, Dean F.
 U: \\Project #R330 - Oliver Bikepath\330 w Option 1.dwg Layout: COMPLETE OVERVIEW Plotted: 12/12/2012 1:16 PM

COUNTY	STATE	PROJECT NUMBER	FISCAL YEAR	SHEET NO.	TOTAL SHEETS
SEDGWICK	KANSAS	AVIATION PATHWAY	2013	3	3



- == SOUTH 1/2 - PATH ALONG BUCKNER/OLIVER (APPROX. 9800 FT)
- == NORTH 1/2 - PATH ALONG 47th St/CLIFTON (APPROX. 10,600 FT)
- == EXISTING - EXISTING CITY OF WICHITA & CITY OF DERBY PATH (APPROX. LOCATION)



**AVIATION PATHWAY
OVERVIEW OF
BIKE/PEDESTRIAN PATH**

PREPARED BY
SEDGWICK COUNTY PUBLIC WORKS
HIGHWAY DEPARTMENT

DAVID C. SPEARS, P.E. DIRECTOR/COUNTY ENGINEER

REVISED	SCALE	DESIGNED	DRAWN	CHECKED	SHEET NO.
	1"=800'	D.F.T.	D.F.T.	D.F.T.	3
	DATE	11/2012	11/2012	11/2012	

DWG:R330 w Option 1.dwg