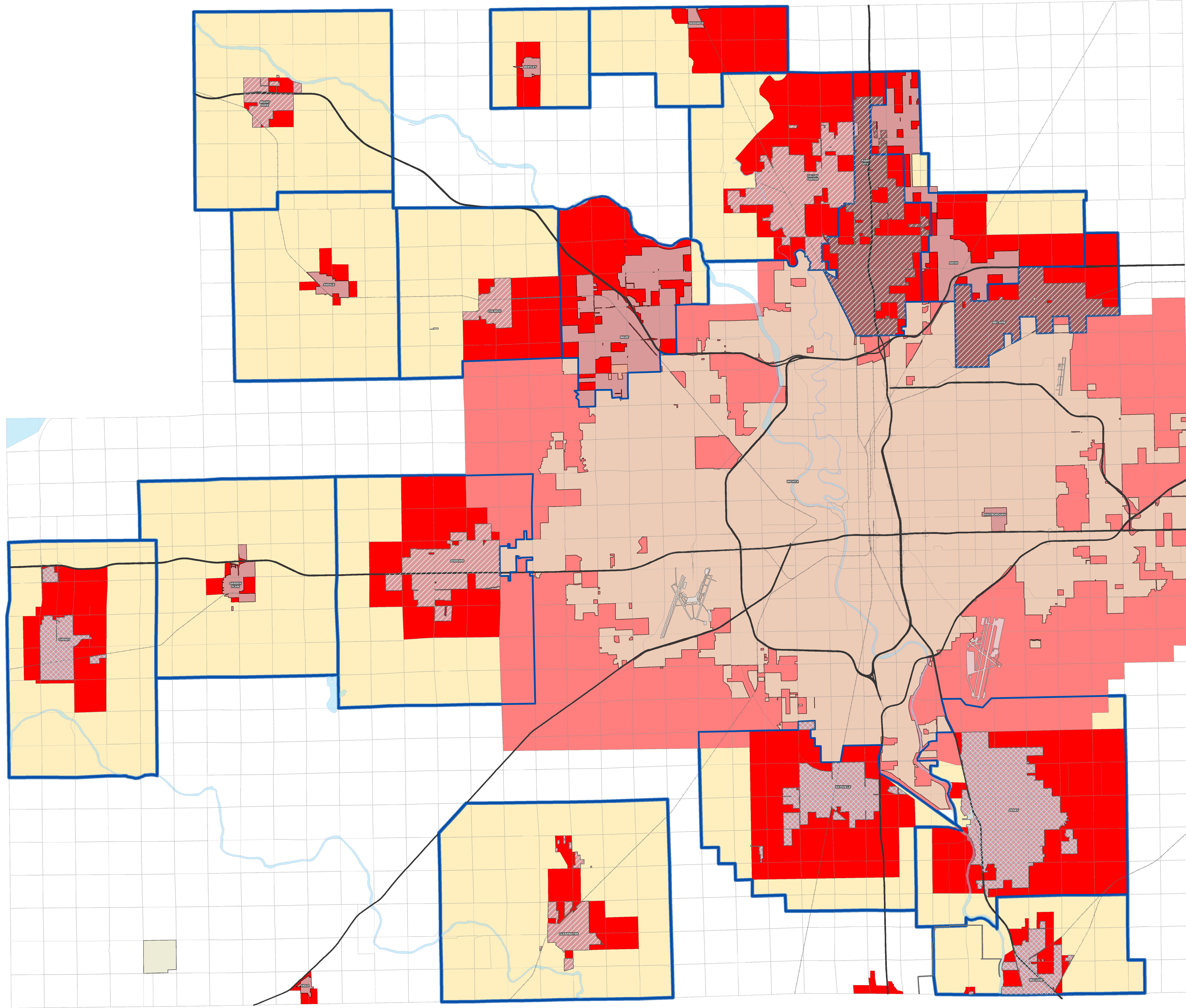
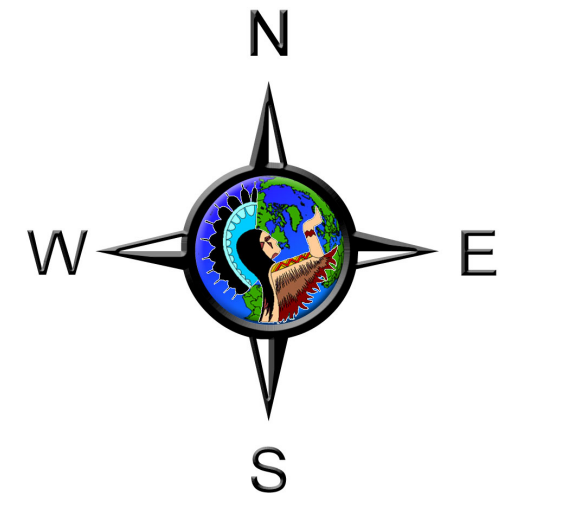


Growth Areas Community Investment Plan 2015 - 2035

Adopted by the MAPC
on 8/20/2015

Sedgwick County, Kansas



Legend

Growth Areas
(Community
Investment
Plan 2015 -
2035)

- Cities
- Wichita

Area of
Influence

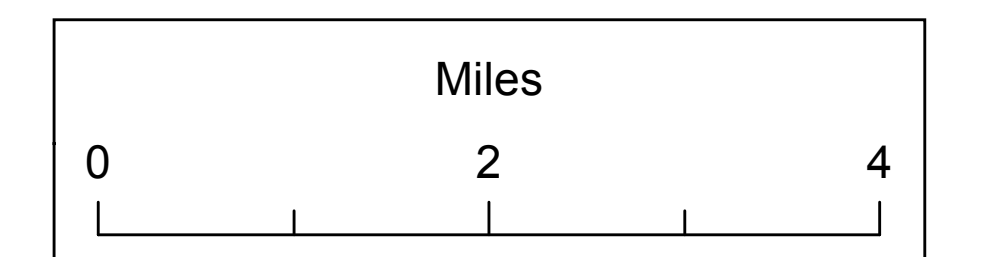
-

City Limits

- Other Cities
-
- WICHITA

Cities Position on ZAOI

- Cities Opposing any ZAOI Changes
- Cities Compromising



Date: 10/15/2015